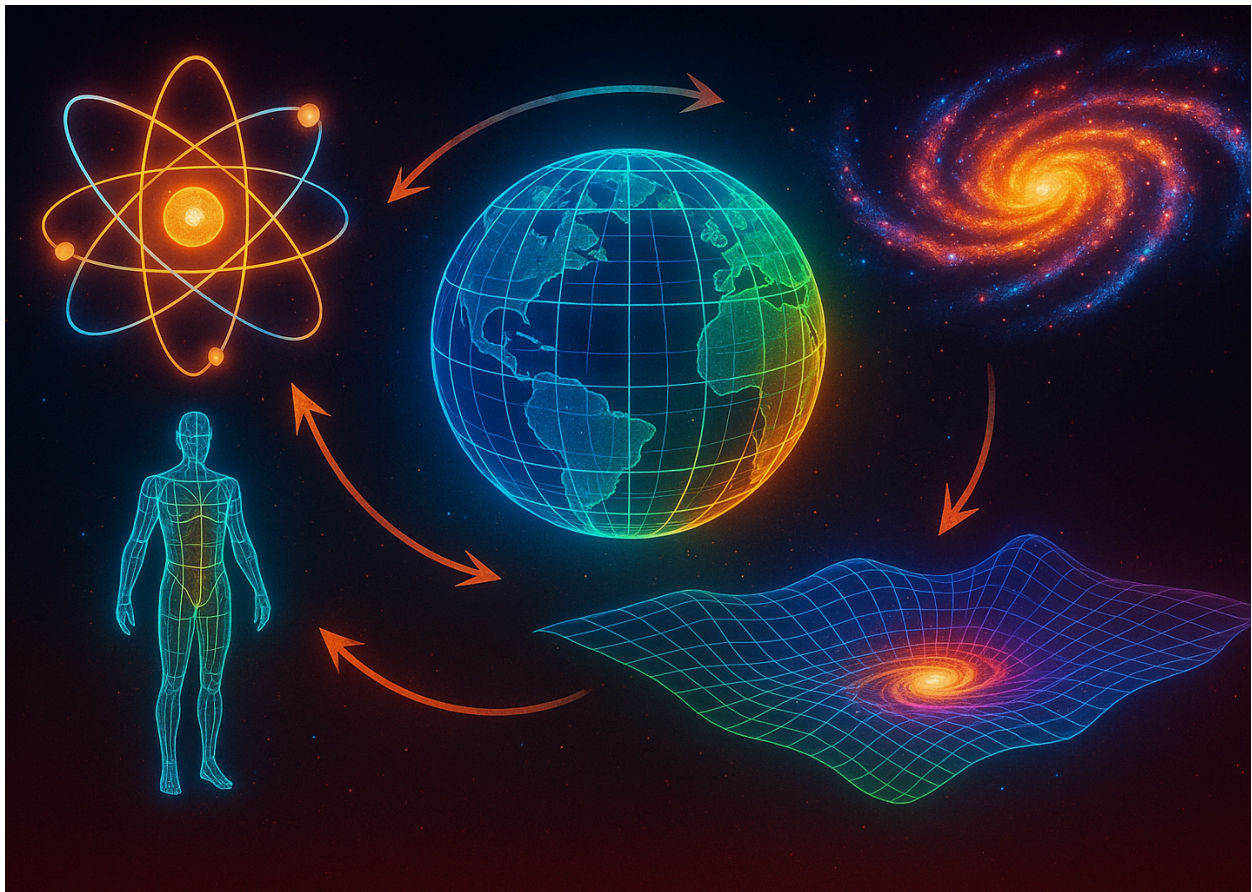


The HAL Future Humanities By Randi Green

Contact Fields - Extraterrestrial Systems and the Resonance of Open Civilizations

Written by Randi Green - Please Refer to my Website, randigreen.one, if You Use this Paper



Introduction

To explore how open-system coherence at the civilizational level prepares humanity for legitimate contact with advanced extraterrestrial intelligences — through compatible field dynamics rather than just technological signaling such as SETI, advanced technology as e.g. [Dyson Spheres](#) or [von Neumann Probes](#) and other similar ideas. Contact is not just an anomalous sighting, a mysterious craft, or an individual psychic experience—it as well is a systems-level phenomenon.

In this perspective, extraterrestrial interaction is an *emergent property of coherent fields*, that is, human, planetary, and non-human intelligences interacting across overlapping informational and energetic architectures. Each system carries its own internal coherence patterns, bandwidths of perception, and alignment protocols.

Coherent fields, in this context, can be understood as holographic-energetic alignment zones, that is, regions of spacetime where information, energy, and consciousness attain sufficient order to operate as a unified pattern across multiple scales of reality.

Every intelligent system—whether an individual consciousness, a planetary biosphere, or a non-human civilization—generates a unique energy signature, a vibrational fingerprint reflecting its internal organization. This signature emerges from the interplay of *structural coherence* (how its subsystems are arranged), *cognitive coherence* (how it processes and integrates information), and *energetic coherence* (how it maintains equilibrium within larger environmental fields).

When these signatures enter resonance with one another, a holographic-energetic alignment or correspondence forms: *each system begins to reflect and encode aspects of the other within its own field*. This is a higher-order systemic synchronization of informational gradients across quantum, energetic, and cognitive substrates. In such a state, the boundaries between “species A” and “species B,” become semi-permeable and begin to “attract each other” in a sort of quantum blend. Information can then be exchanged through shared phase-space, producing what we might call *contact bandwidths*.

Quantum blend refers to a temporary, resonant interpenetration of informational states between distinct systems once coherence has been established across their respective fields. In quantum physics terms, it parallels entanglement, where the state of one particle cannot be described independently of the other. But here, rather than single particles, we are describing higher-order complex coherent systems—biological, cognitive, and energetic—whose probability structures begin to overlap.

When two systems reach compatible vibrational and informational frequencies, their quantum potential fields—the underlying probabilistic scaffolds that define all possible states—can partially merge. This blending creates an interference zone where data, perception, and even identity parameters momentarily coexist. It is not fusion in the chemical sense, but an *informational superposition*, where aspects of each system are accessible to the other through resonance rather than force. At a perceptual level, a quantum blend feels like *mutual cognition*: each intelligence experiences echoes or reflections of the other’s pattern

within its own awareness structure. On a technological level, it might manifest as *signal convergence*—two communication systems locking into phase and exchanging data through shared quantum coherence.

In essence, a quantum blend is a *shared coherence state*—a liminal field where the separation between entities *becomes functionally translucent, allowing reciprocal influence and information transfer without full loss of individuality*. The systems do not collapse into one another; *they co-resonate in a state of dynamic equilibrium*.

Within technological and scientific domains, this coherence translates into the ability to stabilize cross-field resonance through precision alignment of frequency, waveform, and informational structure. Advanced civilizations—those operating as open systems—likely achieve this through mutual alignment protocols, meaning that their technologies, sciences, and consciousness architectures are all harmonized toward cooperative resonance rather than competitive interference.

At the societal level, *this coherence also expresses a possible future trajectory alignment*—the collective intentionality of a *civilization choosing probability fields* that support open contact. These choices are enacted not only through science and technology but through ethics, governance, and shared symbolic architectures that guide collective perception. When a civilization aligns its *probability field activation sequences*, that is, its societal, conscious and technological choices about which potential futures to stabilize, it literally tunes itself toward the informational strata where contact becomes possible.

In this view, coherent fields are both infrastructure and interface. They are the underlying holographic-energetic lattice that binds consciousness, energy, and different types of dimensional versions of matter, and the interactive medium through which civilizations communicate across dimensional thresholds.

Therefore, contact is not an act of traversal through physical space but a synchronization across coherent fields. Each intelligence—human, planetary, or non-human—functions as a complex adaptive system sustained by its own internal coherence dynamics. These dynamics are governed by feedback loops that maintain identity, communication, and energy regulation within a defined frequency bandwidth.

In other words, when two or more such systems attain phase alignment—a temporary harmonization of informational and energetic structure—a holographic-energetic bridge forms between their respective realities.

This bridge can manifest as perception, communication, or even partial material interfacing, depending on the degree of coherence overlap. Human civilization, being an emergent planetary field, generates its own bandwidth of perception shaped by neurological, cultural, and technological filters.

Extraterrestrial or non-human intelligences operate according to their own architectures, be it biological, quantum, or otherwise, which determine how they transmit, receive, and stabilize meaning. The contact event occurs when these architectures find a mutual resonance window, a region of compatible signal coherence within the larger unified field.

Thus, extraterrestrial interaction is not imposed from “outside” but emerges from systemic synchronization—the same principle by which quantum systems entangle, ecosystems self-organize, or neural networks achieve integrated awareness. Contact is a function of shared coherence, not distance.

Overview

1. Contact as a Systems Event

- 1.1 Moving beyond UFO folklore into systems theory.
- 1.2 Why open-system civilizations attract interaction.
- 1.3 The resonance principle: coherence recognizes coherence.

2. The Physics of Contact

- 2.1 Information fields and coherence thresholds.
- 2.2 Probability convergence as the mechanism of interdimensional contact.
- 2.3 Extraterrestrial civilizations as high-coherence systems.

3. Preconditions for Contact

- 3.1 Individual and collective phase stability.
- 3.2 Ethical coherence as energetic compatibility.
- 3.3 Consciousness bandwidth and the communication spectrum.

4. Dyads and Contact Nodes

- 4.1 How coherent human dyads act as field stabilizers or receivers.
- 4.2 Small-scale resonance leading to large-scale network activation.
- 4.3 Contact as relational resonance, not technological outreach.

5. Level One Civilization as a Galactic Participant

- 5.1 What it means to “enter the field” of coherent civilizations.
- 5.2 Systemic humility: cooperation instead of domination.
- 5.3 Open civilization as an emissary of universal evolution.

6. Conclusion — The Future is a Coherent Field

- 6.1 Contact begins with coherence, not curiosity.
- 6.2 Contact as part of expansion fields.
- 6.3 The new frontier: communication through resonance architectures.

1. Contact as a Systems Event

We have established that possible contact can emerge when societal, technological and consciousness patterns converge and resonate, producing effects observable in material reality, consciousness, or both.

Unlike conventional views that suggest technological outreach or chance encounters, a systems-oriented approach recognizes that coherence acts as a prerequisite for interaction. Civilizations—human or extraterrestrial—do not “notice” incoherent systems because their signal is lost within noise. Instead, multidimensional systems naturally recognize other resonance aligned systems due to the fact that coherence resonates with coherence, activating networks of information exchange that would remain inaccessible in incoherent systems.

Contact Beyond Technology - A Relational Event

In a systems framework, contact is relational rather than technological. Extraterrestrial civilizations engage *not with instruments but with field signatures*—the structured informational and energetic coherence of a civilization or individual.

Communication is mediated through resonance patterns, and interaction depends on mutual stabilization of probability fields within the multidimensional network of holographic-energetic properties.

In practical terms, this explains why certain individuals, groups, or civilizations experience repeated contact while others do not: contact requires readiness, alignment, and energetic compatibility.

Consequently, a human that achieves high coherence can act as a microcosmic node, within the larger fields, and enabling a microscopic propagation of resonance. Collections of humans, communities, and cultural structures then scale this effect, *producing macro-level receptivity*. Contact, therefore, is not isolated; it is the emergent consequence of multi-level systemic alignment, where field coherence at one scale amplifies signal sensitivity across the entire network.

Contact as a Measure of Evolutionary Level

Contact—at least with the progressive extraterrestrial open systems—can also be seen as an indicator of systemic evolutionary progress. The more open, coherent, and ethically aligned a system becomes, the more capable it is of hosting inter-systemic interaction with higher-order civilizations. In this sense, extraterrestrial contact functions as both feedback and catalyst: it

reflects the coherence of human systems while simultaneously expanding their field of potential.

Naturally, the opposite is also possible, that is, close-looped systems, due to the mechanics of resonance, are drawn to other similar close-looped systems within the mechanics of quantum blend across dimensional fields. The close-looped systems—those operating within self-reinforcing feedback cycles of limited awareness, control, or extractive intent—also engage resonance, but within the narrower bandwidths of their own confinement.

Resonance, by its very nature, organizes similarity; it attracts like to like due to the cosmic laws of energetic and genetic alignment or affinity. Thus, systems characterized by rigidity, hierarchical entrapment, or suppression of complexity will tend to align with other structures expressing similar informational density and frequency. Whether visible or non-visible.

Within the mechanics of quantum blend, such interactions create echo chambers of coherence, where systems entangle not through openness but through mutual reinforcement of limitation. Across dimensional fields, this manifests as gravitational clustering of closed architectures—energetic, technological, or social—each mirroring the other's restrictions.

The close-looped systems' resonances can appear highly stable, even powerful, because their self-referential dynamics reduce interference from more fluid or higher-order systems. Yet they are evolutionarily terminal and must end in decay and chaos because at some point their coherence turns into systemic isolation, their resonance into a recursive loop that consumes the energetic strata rather than generating them.

In contrast, open systems maintain permeability—allowing resonance principles and quantum blend mechanics to operate as a vehicle of exchange, learning, and adaptive transformation rather than repetition.

The distinction, therefore, is not between contact and no contact, but between contact as amplification of entrapment versus contact as emergence into greater coherence. Civilizations or individuals that achieve high-level resonance can therefore act as bridges for higher-order interaction, modeling what it means to integrate relational, cognitive, and energetic capacities at scale across the full spectrum of awareness from open systems coherence patterns to close-looped hierarchical structures of suppression.

From a practical standpoint, understanding contact as a systems event reframes human preparation. Instead of pursuing external technologies or UFO phenomena, attention shifts to:

-
- *Stabilizing individual and community fields* through relational, cognitive, and energetic alignment.
 - *Expanding consciousness* bandwidth to perceive subtler dimensions of interaction.
 - *Ethical calibration*, ensuring that field coherence aligns with non-harmful, evolutionary principles.
 - *Feedback sensitivity*, cultivating the ability to perceive and integrate signals from wider systems without distortion or projection.

In this way, we become not just passive observers of anomalies but active participants in the inter-systemic field, capable of engaging contact as a structured, evolutionary event rather than a sporadic occurrence.

1.1 Moving Beyond UFO Folklore into Systems Theory

Traditional narratives around UFOs and extraterrestrials often center on spectacle, fear, or individual experience. A systems-based approach reframes contact as a dynamic interaction of coherent fields. Here we work with human and non-human intelligences engaging across structured informational and energetic architectures. Contact is not a singular event; it is the emergent result of alignment between systemic coherence levels.

In essence, traditional UFO and extraterrestrial narratives often fixate on spectacle, fear, or anecdotal individual encounters, emphasizing the mysterious, the anomalous, or the sensational. These approaches frame contact as discrete, isolated events, reducing the phenomenon to curiosity, threat, or entertainment. Such framing obscures the deeper principle: that contact is fundamentally systemic, not episodic.

A systems-based approach shifts the lens from "*what appears in the sky*" to how organized *patterns of intelligence interact across scales of coherence*. Human consciousness, when tuned into higher-order relational, emotional, and cognitive alignment, forms a structured energetic field capable of interacting with other coherent fields, including those of extraterrestrial origin. Contact is not a "*signal from out there*" but a mutual emergence, a resonance event that arises when multiple systems achieve alignment in informational and energetic architecture.

This approach reframes extraterrestrial contact as:

1. *Relational rather than technological*: It is the alignment of fields—human, planetary, and non-human—not merely the operation of machines or vehicles.

-
2. *Multi-scale*: Individuals, communities, or even entire civilizations can function as nodes within a larger network of interaction. Coherence at smaller scales amplifies receptivity at macro levels.
 3. *Emergent and iterative*: Contact is rarely a single, isolated event. It emerges through repeated alignment, feedback, and the stabilization of probability fields over time.

In practical terms, moving into a systems theory perspective means focusing on preparing individual and collective units for interaction rather than waiting for anomalous phenomena to appear.

This involves stabilizing relational individuals, communities, and broader social or ecological structures to reach coherence thresholds that are detectable by advanced civilizations. It also recognizes that ethical, cognitive, and emotional alignment is as important as technological or physical preparedness.

By reframing UFO phenomena as a dynamic systemic process, we invite the possibility of viewing contact as part of the evolutionary trajectory of human civilization, rather than a curiosity or fear-based anomaly. Contact, then, becomes both a mirror and a lever: a mirror of the system's current coherence, and a lever for accelerating the alignment and expansion of human capacities in resonance with the wider universal field.

1.2 Why Open-System Civilizations Attract Interaction

Open-system civilizations—those that cultivate coherence, adaptability, and feedback-based evolution—naturally resonate with other coherent systems. This is not about visibility or power but about *mutual field compatibility*. Systems with aligned informational structures recognize each other as potential collaborators in the larger evolutionary process.

Open-system civilizations act as resonance hubs within the cosmic network of intelligence. Unlike closed, rigid, or hierarchical systems, open systems emit informational and energetic signatures that are readable and interpretable by other coherent systems. This principle of energetic or vibrational similarity is not about influence, or technological superiority; it is compatibility in structure and function.

Within the architecture of contact fields, *benevolence* and *malevolence* can be reframed as *expressions of systemic orientation toward coherence or contraction*. Open-system civilizations function as resonance hubs precisely because their internal organization is founded upon permeability, mutual recognition, and reciprocity of exchange.

Their coherence is dynamic rather than fixed; it allows information, energy, and consciousness to circulate freely while maintaining structural integrity. When such systems interact with others, they tend to amplify expansion—greater awareness, synthesis of knowledge, and elevation of shared complexity.

Conversely, close-looped and contractive systems emit rigid resonance patterns that seek dominance, absorption, or insulation. Their coherence depends on control, not cooperation. To them, contact serves extraction, assimilation, or stabilization of their own entropy rather than mutual growth. From the perspective of resonance dynamics, this manifests as energetic predation: the appropriation of coherence from other systems to compensate for their own structural decay.

Benevolence, therefore, is not simply “good intent” but the natural orientation of systems aligned with the principle of open coherence—those that expand and progress by sharing.

Malevolence, on the other hand, emerges from self-reinforcing isolation—systems that maintain identity through exclusion or dominance.

In quantum blend interactions, these orientations act as filters: expansive systems will detect, attract, and merge with other expansive systems, while contractive ones will entangle with their own echoes across dimensional strata.

This also implies that contact potential itself is a diagnostic tool of civilization. *A civilization that encounters high-frequency, benevolent intelligences is doing so not by invitation or reward, but by resonance compatibility.*

Likewise, a civilization that draws parasitic or manipulative entities is simply meeting its own unresolved frequencies of closure. In this light, cosmic contact is less about visitation and more about mirror mechanics of coherence—each meeting an echo of its own structure in the vast layers of the cosmic holographic-energetic continuum.

Open-systems civilizations naturally attract interaction for several reasons:

1. *Mutual field alignment*: Coherent systems recognize compatible patterns in each other. Just as synchronized oscillators in physics naturally entrain, civilizations with similar organizational, ethical, and relational structures naturally resonate.
2. *Collaborative potential*: Open systems are prepared to participate in multi-scale co-evolution. Interaction is not a unilateral extraction of resources or data; it is mutual information exchange, catalyzing emergent possibilities.

-
3. *Stability and trustworthiness*: High-coherence systems are reliable partners. They maintain phase integrity and do not introduce chaotic interference, making them suitable for iterative, long-term interaction.

In short, open-system civilizations act as cosmic attractors. Their openness is a signal and a stabilizing factor: a beacon that says, *"This system is ready to engage in structured co-evolution."*

1.3 The Resonance Principle - Coherence Recognizes Coherence

Interactions between civilizations are governed by the principle that coherence supports coherence.

A highly tuned system emits a structured informational signature that can only be interpreted by other systems capable of matching its bandwidth. In this sense, contact is a resonance phenomenon, not a mechanical or technological act.

Systems with high internal order—structural, ethical, cognitive, and energetic—emit multi-layered informational signatures. These signatures are inherently selective: only other systems capable of matching the complexity and bandwidth can detect and respond.

This principle implies several key dynamics:

1. *Resonant activation*: Contact is triggered when compatible fields align. Small fluctuations in one system can propagate to another, creating a mutual amplification loop that stabilizes both systems' coherence.
2. *Energetic compatibility*: Systems that are misaligned, entropic, or unstable will either fail to register each other or create interference patterns, preventing meaningful interaction.
3. *Non-locality of interaction*: Resonance is not confined to direct spatial proximity. Coherence acts holographically; distant nodes can influence each other when their informational and energetic architectures are matched.

In practice, this means that contact is not a mechanical or technological act but an emergent, relational phenomenon: the universe *"selects"* interaction between systems capable of co-evolving be it open or closed systems.

Civilizations do not need to send signals or launch spacecraft; their internal coherence automatically emits a field of detectability, and contact emerges naturally when two or more systems converge in compatible resonance.

2. The Physics of Contact

Understanding contact as a systemic phenomenon requires moving beyond the conventional mechanics of propulsion, material craft, or physical visitation. At its core, *contact arises when coherent informational fields intersect*—when two or more complex systems reach a threshold of resonance compatibility. At that point, communication and interaction are not transmitted through linear means but emerge through the harmonization of fields themselves.

These events unfold through three intertwined dynamics: field resonance, phase alignment, and coherence modulation.

- *Field resonance* describes the vibrational correspondence between systems—an alignment of vibrational patterns, topological structures, and energy states that permits mutual recognition.
- *Phase alignment* occurs when the timing, rhythm, or oscillatory patterns of consciousness fields synchronize sufficiently for data exchange to occur. It is less about sending a signal and more about tuning an instrument until it vibrates sympathetically with another.
- *Coherence modulation* refers to the process through which both systems adjust, stabilize, and refine their internal organization to maintain the shared interface. This mutual adaptation gives rise to emergent phenomena—perceptions, visions, symbolic transmissions, or physical manifestations that humans interpret as “contact.”

In this view, spacecraft and physical craft sightings may be secondary artifacts of deeper field interactions. They are the visible edges of an informational interference pattern between systems of differing density, frequency, or dimensional bandwidth. Contact is therefore a byproduct of coherence, not a cause of it.

From this standpoint, the capacity for contact becomes a developmental marker: it depends not on technology, but on the coherence and ethical refinement of the participating systems. The more stabilized and integrative a civilization’s consciousness architecture becomes, the more transparent its boundaries to compatible intelligences. Thus, true inter-systemic contact is not achieved—it is allowed by resonance itself.

2.1 Information Fields and Coherence Thresholds

Each intelligent system—whether human or extraterrestrial—operates through informational and energetic fields. Contact emerges when these fields exceed coherence thresholds,

allowing mutual recognition and information exchange without signal degradation. Systems below threshold may perceive anomalies, but cannot sustain relational resonance.

Every consciousness, civilization, or complex system generates an informational field: a holographic-energetic pattern encoding identity, capacities, and potential interactions. The intensity, clarity, and structure of this field determine coherence thresholds—the minimum alignment necessary for meaningful interaction.

- *Thresholds as filters:* Only systems that meet or exceed each other's coherence threshold can interact without distortion. This explains why some civilizations or individuals perceive NHI (non-human intelligence) signals while others remain unaware—they are effectively "out of phase."
- *Dynamic modulation:* Coherence is not static. Environmental, social, and internal changes can strengthen or weaken a system's field, raising or lowering thresholds dynamically. Systems that continuously optimize their coherence are therefore more likely to sustain contact.

2.2 Probability Convergence as Interdimensional Contact

Contact events can be understood as *probability field convergence*: overlapping potentialities between distinct but compatible systems. *Where probability streams align, shared realities or perceivable phenomena manifest, providing the interface for interaction without requiring traditional physical proximity.*

Contact thus occurs when probability fields converge. In a holographic-energetic model:

- *Each system* exists as a spectrum of potential states, each with associated probabilities.
- *When two coherent systems* align, their probability distributions overlap, generating a localized attractor in which inter-system interaction becomes possible.
- *This convergence* is the "mechanism" by which communication or contact manifests: it is less about one system reaching another and more about both converging into compatible resonance states.

Practically, this means that the act of preparation—through personal, collective, or societal coherence work—shapes the probability landscape, creating conditions for extraterrestrial systems to intersect.

2.3 Extraterrestrial Civilizations as High-Coherence Systems

Advanced extraterrestrial civilizations function as high-coherence systems. They are based upon systemic architectures that maintain holographic-energetic alignment across vast dimensional, non-temporal, and informational scales.

These systems are optimized for field regulation, probability management, and coherent emergence, making them inherently capable of detecting and interacting with evolving human dyads and collective structures. From this perspective, extraterrestrial civilizations that engage with humanity—or any emergent intelligence—can be understood as high-coherence attractors. Their operational principles include:

- *Relational coherence*: They maintain internal alignment and inter-relational stability across nodes of their civilization.
- *Ethical/energetic integrity*: Interaction is guided by systemic principles rather than conquest; they resonate with systems that mirror these structures.
- *Holographic-energetic communication*: Information is shared through coherent field dynamics rather than conventional broadcasting, explaining phenomena that defy linear technological explanation.

In essence, extraterrestrials are not “aliens” in a mechanical sense—they are participants in the broader resonance network of evolution, interacting only where compatibility and coherence allow. This aligns with the open-system principle: interaction emerges organically, not through force or imposition.

3. Preconditions for Contact

Extraterrestrial contact, understood as a systemic resonance event, is not random—it requires specific preconditions. These conditions exist across individual, dyadic, and collective levels, and they ensure that human systems are energetically and informationally compatible with higher-coherence civilizations.

3.1 Individual and Collective Phase Stability

Humans, as open-field systems, must achieve phase stability—both personally and collectively—to act as viable nodes for contact. Instability introduces decoherence, which attenuates field signals and reduces compatibility with advanced extraterrestrial systems. Phase stability refers to the internal coherence of a system across multiple dimensions: emotional, cognitive, ethical, and energetic.

Both individuals and collectives must maintain a stable internal oscillation to serve as a viable node in larger coherence networks.

- *Individual phase stability*: A person's thoughts, emotions, and intentions must oscillate in a harmonized pattern. Internal contradictions, unresolved trauma, or fragmented cognition act as phase noise, disrupting alignment. Practices like mindfulness, reflective processing, and structured field work can enhance stability.
- *Collective phase stability*: Groups, communities, and organizations function as emergent fields. Their coherence depends on shared purpose, transparent communication, and effective feedback loops. Dispersed or conflicting values reduce the system's ability to resonate with high-coherence extraterrestrial nodes.

Dyads—two-person systems—can also act as micro-stabilizers, amplifying phase stability by synchronizing their individual fields and generating local coherence attractors. [Learn More.](#)

3.2 Ethical Coherence as Energetic Compatibility

Systems that manifest ethical coherence, such as alignment of intent, transparency, and non-harm, generate energetically compatible signatures. Contact is also about ethical and informational integrity of the participating system.

A high-coherence civilization will naturally resonate with systems that reflect ethical alignment and systemic integrity. Ethical coherence is less about social norms and more about energetic congruence between intention and action.

- *Energetic alignment*: Intentions, behaviors, and system-level outcomes must harmonize. Discrepancies create field distortions that interfere with resonance.
- *Compatibility filter*: Ethical coherence acts as a precondition for energetic compatibility. Systems that project coercive, manipulative, or extractive energy are unlikely to sustain meaningful contact.
- *Dyadic ethics*: Within [dyads](#), mutual accountability and transparency amplify ethical coherence, creating local attractors for extraterrestrial interaction.

3.3 Consciousness Bandwidth and the Communication Spectrum

Contact requires expansion of consciousness bandwidth. The capacity to perceive and integrate multi-dimensional information is key. Humans must cultivate receptivity across cognitive, emotional, and energetic spectra, increasing their range of resonance and enabling

interaction with extraterrestrial communication architectures. Contact requires sufficient bandwidth—the ability of a system to receive, process, and transmit high-dimensional information.

- *Individual bandwidth*: Cognitive flexibility, emotional intelligence, and energetic sensitivity expand the ability to integrate new information without collapse.
- *Dyadic bandwidth*: Two coherent systems interacting can increase joint bandwidth, functioning as a resonant amplifier capable of perceiving subtle signals that individuals alone cannot.
- *Collective bandwidth*: Societal or cultural openness to new modalities of information enhances the probability of large-scale contact events.

Communication with extraterrestrial systems often occurs outside conventional sensory or technological channels. Systems with sufficient bandwidth—individuals, dyads, networks, or entire communities—can access holographic-energetic signatures and integrate them into their informational ecosystem.

4. Dyads and Contact Nodes

In open-system civilizations, [dyads](#) do more than sustain relational coherence—they act as active nodes in the holographic-energetic architecture of reality, capable of stabilizing fields, amplifying signals, and serving as localized gateways for intersystem interaction.

4.1 How Coherent Human Dyads Act as Field Stabilizers or Receivers

Dyads—two-person systems with sustained coherence—act as local amplifiers of informational resonance. When stabilized, these nodes can receive, interpret, and redistribute signals that might otherwise dissipate in incoherent fields.

A dyad that maintains phase-aligned coherence becomes a living node within a larger resonance network. This is not merely metaphorical: in the holographic-energetic framework, each dyad generates a local attractor, a stable oscillatory pattern that can:

- *Stabilize local fields*: The synchronized energy of the dyad reduces noise and enhances clarity, providing a clean channel for informational inflow.
- *Act as receivers*: By maintaining ethical coherence and high bandwidth, dyads can detect subtle informational or energetic signals that would dissipate in incoherent systems.

-
- *Amplify signals:* Dyads transmit resonance outward, allowing signals to propagate to larger networks, scaling their influence beyond the immediate pair.

Practically, this can manifest as synchronized insight, intuitive problem-solving, or emergent creativity that neither partner could generate alone, forming a fertile interface for intersystem communication.

4.2 Small-Scale Resonance Leading to Large-Scale Network Activation

A coherent dyad functions as a seed field, whose resonance propagates outward, activating larger human and planetary networks. This cascading effect prepares the collective field for higher-order contact, allowing civilization-scale coherence to emerge.

Dyads function as fractal units of coherence. When multiple dyads achieve alignment across a community or network:

- *Network coherence emerges:* The interactions between nodes reinforce phase stability and ethical alignment across the system.
- *Macro attractors form:* High-coherence clusters can act as energetic “beacons,” increasing the probability of contact or alignment with extraterrestrial systems.
- *Feedback propagation:* Insights, field stabilizations, and emergent signals cascade outward, creating a chain reaction of systemic evolution.

The principle is fractal, that is, coherence at the dyadic scale seeds coherence at the community, planetary, and ultimately interstellar scales. Naturally, this dynamic can also be seen as a threat for factions that do not want the general public to achieve the positive open-system coherence pattern, although they, themselves, are operating similarly with close-looped systems following the same mechanics albeit in a negative close-loop coherence pattern.

4.3 Contact as Relational Resonance, Not Technological Outreach

True contact occurs through field alignment and relational resonance rather than mechanical tools. Civilizations respond not to probes or signals but to the coherence and maturity of interacting systems—a principle often overlooked in mainstream discussions. Contact is fundamentally a resonance-based event, not a matter of engineering, radio signals, or spacecraft. Dyads exemplify this principle by demonstrating:

- *Relational alignment as a vector:* Two aligned systems create a coherent interface that can interact with higher-coherence civilizations.

-
- *Field permeability*: Coherent dyads act as a flexible but contained aperture for energetic and informational exchange.
 - *Emergence of contact phenomena*: Signals, intuitions, or anomalies may appear as a byproduct of dyadic resonance rather than intentional outreach.

The dyad, therefore, is not only a unit of human relational evolution but also a gateway node in the broader matrix of galactic interaction.

5. Level One Civilization as a Galactic Participant

A Level One Civilization is defined not by technology alone but by its capacity for systemic coherence, adaptive openness, and relational intelligence. At this stage, human societies function as open-field participants in a larger galactic network, where ethical alignment, phase stability, and informational resonance determine participation in interstellar evolution.

5.1 What It Means to “Enter the Field” of Coherent Civilizations

To participate, humanity must achieve systemic coherence that mirrors extraterrestrial organizational structures. This is less about conquest and more about synchronization with universal resonance fields, making human civilization recognizable as an evolving entity.

“Entering the field” is not a metaphor but a description of alignment:

- *Coherence interface*: A civilization must achieve sufficient internal coherence to be perceptible to other high-order systems. Disorder, entropy, or internal fragmentation acts as a barrier to interaction.
- *Dyadic and network scaffolds*: Microcosms such as dyads and small collectives serve as entry points or portals for this engagement. They stabilize and amplify the civilization’s signature.
- *Reciprocal recognition*: Participation requires mutual bandwidth compatibility. Highly coherent systems can detect similar coherence patterns across distances, making “contact” an emergent property of alignment, not pursuit.

In essence, a Level One Civilization becomes legible to the galactic network through its coherent relational structures and ethical consistency.

5.2 Systemic Humility: Cooperation Instead of Domination

Interaction with other civilizations requires humility and adaptability. Level One civilizations do not dominate—they cooperate across systemic boundaries, contributing to mutual evolution

rather than asserting superiority. Advanced civilizations operate on collaborative principles, not conquest:

- *Resonance-based diplomacy*: Engagement is determined by energetic compatibility, not military might.
- *Co-evolution over exploitation*: Successful systems contribute to the evolution of other systems while advancing their own capacities.
- *Transparency and integrity*: Ethical coherence ensures that interactions expand rather than collapse the receiving field.

The implication is that openness and collaboration are evolutionarily advantageous, allowing civilizations to expand without imposing destructive asymmetry.

5.3 Open Civilization as an Emissary of Universal Evolution

An open, coherent civilization acts as a conduit for evolutionary flow, bridging local, planetary, and galactic intelligence. Its very organization—dyads, networks, and coherent structures—becomes a template for inter-systemic resonance and collaborative expansion.

By fostering internal coherence and relational intelligence:

- *Systems-level impact*: Open civilizations act as amplifiers and stabilizers within the broader cosmic network.
- *Field harmonization*: Their signature contributes to probability field alignment, increasing the likelihood of synchronized evolution across multiple civilizations.
- *Dyads as propagators*: Human dyads, functioning as localized high-coherence nodes, become messengers of this field, transmitting resonance through social, ecological, and planetary networks.

Participation in a galactic network is therefore a function of relational, ethical, and systemic maturity rather than technology or visibility. The civilization that evolves its dyads, networks, and coherence architectures effectively signals its readiness to contribute to universal evolution.

6. Conclusion — The Future is a Coherent Field

The emergence of a coherent civilization is not a technological milestone but a relational one. At its core, it depends on the cultivation of aligned systems of intelligence—individuals, dyads,

networks, and larger collectives capable of sustaining complexity without collapse. These structures form the scaffolding of future planetary evolution, linking human society to interstellar networks of coherent civilizations.

6.1 Contact Begins with Coherence, Not Curiosity

The capacity for interaction depends on systemic alignment and field stability, not the desire to know. Curiosity is insufficient without coherence. True contact is an emergent property of systemic alignment, not a function of searching, probing, or curiosity alone:

- *Coherence acts as a resonance signature that other systems can detect.*
- *Civilizations or intelligences capable of interpreting this signature only respond to fields that match their bandwidth.*
- *Efforts to force interaction without internal alignment result in noise, feedback loops, and entropic collapse rather than meaningful connection.*

In other words, the prerequisite for contact is maturity of the field itself—individuals, dyads, and communities tuned to coherent relational and ethical dynamics.

6.2 Contact as Part of Expansion Fields

Individuals, dyads, collectives, networks, and Level One organizational principles function as nodes in expansion fields, gradually extending human consciousness into broader interstellar systems. Engagement with other systems is less about reaching outward and more about radiating alignment inward:

- *High-coherence individuals, dyads and collectives act as nodes in a planetary field capable of transmitting stability, integrity, and creative potential.*
- *These nodes influence probability fields on both local and global scales, shaping the environment in which inter-system interactions become possible.*
- *Expansion is thus systemic and evolutionary, rather than technological or exploitative.*

6.3 Communication Through Resonance Architectures

The next phase of contact is architectural, not technological: building relational, dyadic, and collective structures that can support high-coherence information transfer. Humanity's evolution into a Level One Civilization prepares both our species and our field structures for meaningful engagement with the wider intelligent cosmos. The future is a coherent field, where individuals, dyads, collectives, and civilizations align to participate in a universal network of evolution. In this view, humanity's advancement is inseparable from its capacity for

ethical, relational, and systemic resonance, creating the conditions for engagement with extraterrestrial intelligences and the broader cosmic ecosystem. The future of human civilization—and its role in the galactic community—depends on mastery of resonance as a form of intelligence:

- *Individuals, dyads and networks as instruments*: Structured human relationships are microcosms of open-system civilization, propagating coherence across scales.
- *Resonance architectures*: These are dynamic, self-regulating frameworks that allow information, ethics, and creative potential to flow across biological, social, and cosmic fields.
- *Coherent signal transmission*: Contact is therefore relational, energetic, and systemic rather than technological; the “message” is the stability and evolution of the field itself.

As humanity approaches a threshold of systemic maturity, contact with extraterrestrial or interdimensional intelligences becomes not a matter of curiosity, but a reflection of our own coherence and ethical alignment.

Open-system civilizations are not defined by their technology, dominance, or visibility—they are defined by their ability to act as resonance hubs: relational, adaptable, and capable of propagating coherent informational structures across scales. In this framework, the future of human evolution is inseparable from our capacity to cultivate field integrity. The internal harmonization of consciousness, the alignment of societal structures with emergent ethical principles, and the cultivation of networks that propagate coherence rather than rigidity. Contact is a mirror, showing the possibilities and the limitations of our current systems, and offering a scaffold for the evolution of both species-level awareness and inter-systemic collaboration.

The responsibility is profound: as humans refine our relational, dyadic, and collective architectures, we prepare the necessary substrate for engagement with intelligences whose coherence and ethical frameworks may far surpass our own. In doing so, humanity participates in the ongoing expansion of universal intelligence, contributing not merely to survival or progress, but to the resonant flourishing of life itself across dimensional and cosmic scales. The path forward is to cultivate coherence, embrace ethical alignment, and construct architectures of resonance that mirror the cosmos. In doing so, humanity transforms from a species constrained by circumstance into an active participant in the living network of intelligent evolution.